

04

L-Keys



L-Keys
for Hexagon Socket Screws

154



L-Keys
for TORX® and TORX PLUS® Screws

157



L-Keys

Ever rounded out a screw?

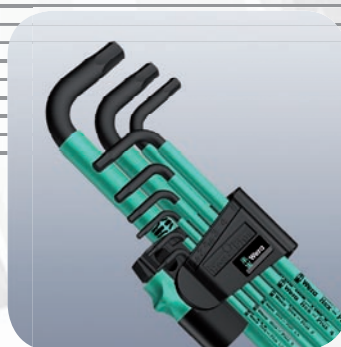
Hex-Plus L-keys from Wera spread the torque via a greater contact surface in the screw head and this **reduces the notching effect (rounding out) that damages** the head of the screw.

L-keys can transfer high torque.

The Wera know-how with regard to close-tolerance manufacturing, careful material selection and refined hardening technologies ensures safety at the workplace. The larger contact surface from the Hex-Plus design delivers up to 20% more torque than conventional keys.

The various models:

Chrome-plated hexagon L-keys
with high corrosion protection.



SPKL – protects fingers!
L-keys with a **green thermoplastic sleeve (SPKL)** are manufactured out of easy-to-grip, circular material. The sleeve ensures that work is safe and comfortable even at low temperatures. High corrosion protection features thanks to the special BlackLaser surface treatment. The contrasting inscriptions on the sleeves mean that it is easy to recognise the correct sizes and this makes it simpler to find the right tool.



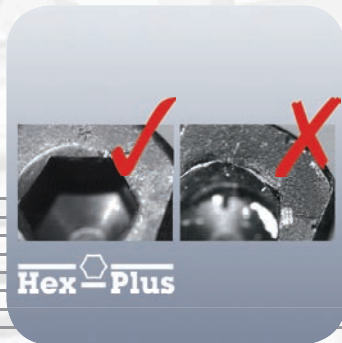
Hexagon L-keys **with BlackLaser surface treatment** for outstanding surface protection and long service life. High corrosion protection.



The product advantages

Hex-Plus

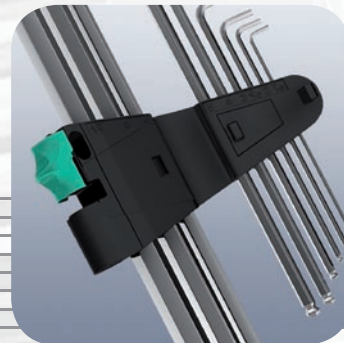
The problem with hexagon socket screws is that they quickly become rounded. This is caused by the sharp corners of the conventional tool pressing against the inside of the screw head. The gradual wear process eventually leads to a rounding of the head. **Wera Hex-Plus tools have a larger contact surface inside the screw recess. This reduces the notching effect and thereby also the deformation of the screw head.** At the same time **up to 20 % more torque** can be transferred.



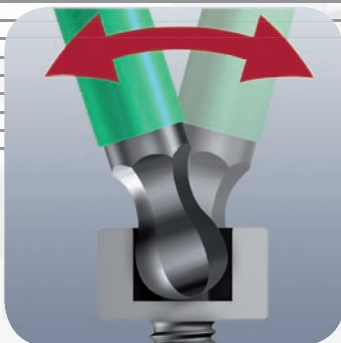
The Wera HF profile (HF = holding function) has a very special geometry. The geometric form fit and the wedging forces that are then generated mean that TORX® screws made to Acument Intellectual Properties specifications can be **securely held on the tip of the tool**. Ideal for work in **difficult-to-access areas**.



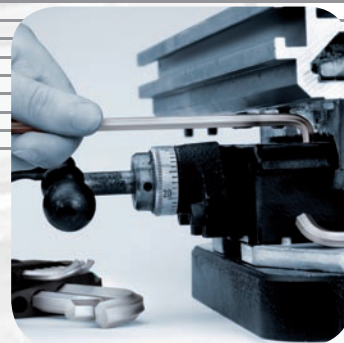
The wear-resistant clip material ensures that the L-keys are **securely held** yet are easy to remove.



The size of each L-keys has been engraved by a laser, making it easy to find the right tool.



With or without ball-end. The ball-end on the long arm of the hexagon and TORX® L-keys enables angled access to drive screws in awkward places.



L-key with extra short arm for use on screws that are difficult to access.

L-Keys for Hexagon Socket Screws

The Hex-Plus profile extends the service life of hexagon socket screws

[SHOP NOW](#)

950 SPKL L-key, metric, BlackLaser

Hex-Plus



Application: Hexagon socket screws
Design: BlackLaser surface, durable plastic sleeve
Tip: Hex-Plus, ball-end hexagon on long arm

| Code | mm | mm | mm | mm | mm | |
|-------------|------|-----|----|----------|----------|----|
| 05022500002 | 1.5 | 90 | 14 | 3 1/2" | 9/16" | 10 |
| 05022502002 | 2.0 | 101 | 16 | 4" | 5/8" | 10 |
| 05022504002 | 2.5 | 112 | 19 | 4 7/16" | 3/4" | 10 |
| 05022506002 | 3.0 | 123 | 21 | 4 7/8" | 27/32" | 10 |
| 05022508002 | 4.0 | 137 | 24 | 5 3/8" | 1" | 10 |
| 05022510002 | 5.0 | 154 | 27 | 6 1/16" | 1 1/16" | 10 |
| 05022512002 | 6.0 | 172 | 31 | 6 3/4" | 1 1/4" | 10 |
| 05022514002 | 8.0 | 195 | 37 | 7 11/16" | 1 7/16" | 10 |
| 05022516002 | 10.0 | 224 | 42 | 9" | 1 11/16" | 10 |

950 SPKL L-key, imperial, BlackLaser

Hex-Plus



Application: Hexagon socket screws
Design: BlackLaser surface, durable plastic sleeve
Tip: Hex-Plus, ball-end hexagon on long arm

| Code | mm | mm | mm | mm | mm | |
|-------------|-------|-----|----|----------|----------|----|
| 05022519002 | 5/64" | 101 | 16 | 4" | 5/8" | 10 |
| 05022520002 | 3/32" | 112 | 19 | 4 7/16" | 3/4" | 10 |
| 05022521002 | 1/8" | 123 | 21 | 4 7/8" | 27/32" | 10 |
| 05022522002 | 5/32" | 137 | 24 | 5 3/8" | 1" | 10 |
| 05022523002 | 3/16" | 154 | 27 | 6 1/16" | 1 1/16" | 10 |
| 05022524002 | 7/32" | 172 | 31 | 6 3/4" | 1 1/4" | 10 |
| 05022525002 | 1/4" | 185 | 34 | 7 1/4" | 1 5/16" | 10 |
| 05022526002 | 5/16" | 195 | 37 | 7 11/16" | 1 7/16" | 10 |
| 05022527002 | 3/8" | 224 | 42 | 9" | 1 11/16" | 10 |

950 PKL L-key, imperial, BlackLaser

Hex-Plus



Application: Hexagon socket screws
Design: BlackLaser surface
Tip: Hex-Plus, ball-end hexagon on long arm

| Code | mm | mm | mm | mm | mm | |
|---------------------------|-------|-----|----|---------|---------|----|
| 05022079002 ¹⁾ | 0.05" | 83 | 14 | 3 1/4" | 9/16" | 10 |
| 05022081002 ¹⁾ | 1/16" | 91 | 15 | 3 1/2" | 19/32" | 10 |
| 05022068002 | 5/64" | 100 | 16 | 4" | 5/8" | 10 |
| 05022070002 | 3/32" | 112 | 18 | 4 7/16" | 23/32" | 10 |
| 05022071002 | 7/64" | 119 | 19 | 4 3/4" | 3/4" | 10 |
| 05022072002 | 1/8" | 126 | 20 | 5" | 25/32" | 10 |
| 05022073002 | 9/64" | 132 | 23 | 5 3/16" | 29/32" | 10 |
| 05022074002 | 5/32" | 140 | 25 | 5 1/2" | 1" | 10 |
| 05022076002 | 3/16" | 160 | 25 | 6 5/16" | 1" | 10 |
| 05022078002 | 7/32" | 180 | 27 | 7 1/16" | 1 1/16" | 10 |
| 05022080002 | 1/4" | 190 | 34 | 7 1/2" | 1 5/16" | 10 |
| 05022082002 | 5/16" | 200 | 36 | 8" | 1 7/16" | 10 |
| 05022095002 | 3/8" | 212 | 38 | 8 3/8" | 1 1/2" | 5 |
| 05022096002 | 1/2" | 224 | 40 | 9" | 1 9/16" | 5 |

¹⁾ Regular hexagon



Why do the SPKL L-keys from Wera have a round design and come with a rubber sleeve?



L-keys made from circular material fit into the hand better and allow less strenuous work over a longer period. Additionally, the rubber sleeve provides a pleasant grip, particularly in applications at low temperatures.

The distinct markings on the sleeve allow tools to be found quickly. Moreover, the round material keys are more robust, particularly where smaller sizes are concerned.

SHOP NOW

950 PKL BM L-key, metric, BlackLaser

Hex-Plus



Application: Hexagon socket screws

Design: BlackLaser surface

Tip: Hex-Plus, ball-end hexagon on long arm

| Code | mm | mm | mm | | | |
|---------------------------|------|-----|----|----------|---------|----|
| 05027101002 ¹⁾ | 1.5 | 90 | 14 | 3 1/2" | 9/16" | 10 |
| 05027102002 | 2.0 | 100 | 16 | 4" | 5/8" | 10 |
| 05027103002 | 2.5 | 112 | 18 | 4 7/16" | 23/32" | 10 |
| 05027104002 | 3.0 | 126 | 19 | 5" | 3/4" | 10 |
| 05027105002 | 4.0 | 140 | 25 | 5 1/2" | 1" | 10 |
| 05027106002 | 5.0 | 160 | 28 | 6 5/16" | 1 3/32" | 10 |
| 05027107002 | 6.0 | 180 | 32 | 7 1/16" | 1 1/4" | 10 |
| 05027110002 | 7.0 | 190 | 34 | 7 1/2" | 1 5/16" | 10 |
| 05027108002 | 8.0 | 200 | 36 | 8" | 1 7/16" | 10 |
| 05027109002 | 10.0 | 219 | 40 | 8 11/16" | 1 9/16" | 10 |
| 05027111002 | 12.0 | 248 | 45 | 10" | 1 3/4" | 5 |

¹⁾ Regular hexagon

950 SPKL/9 SM N L-key set, metric, BlackLaser

Hex-Plus

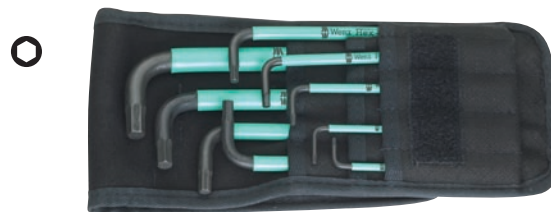


9-piece set in a two-component clip

| Code | | | | |
|-------------|----------|---|--|---|
| 05022088003 | 950 SPKL | 1 x 1.5x90; 1 x 2.0x101; 1 x 2.5x112; 1 x 3.0x123; 1 x 4.0x137; 1 x 5.0x154; 1 x 6.0x172; 1 x 8.0x195; 1 x 10.0x224 | | 5 |

950 SPKL/9 SZ L-key set, imperial, BlackLaser

Hex-Plus



9-piece set in belt pouch

| Code | | | | |
|-------------|---------------|--|--|----|
| 05022528002 | 950 SPKL inch | 1 x 5/64"x101; 1 x 3/32"x112; 1 x 1/8"x123; 10 1 x 5/32"x137; 1 x 3/16"x154; 1 x 7/32"x172; 1 x 1/4"x185; 1 x 5/16"x195; 1 x 3/8"x224 | | 10 |

950 SPKL/7B SM Magnetic L-key set, metric, BlackLaser

Hex-Plus



7-piece set in a two-component clip with magnetiser

| Code | | | | |
|-------------|----------|--|--|---|
| 05022533004 | 950 SPKL | 1 x 1.5x90; 1 x 2.0x101; 1 x 2.5x112; 1 x 3.0x123; 1 x 4.0x137; 1 x 5.0x154; 1 x 6.0x172 | | 5 |



How to avoid rounding out screw heads



Hexagon screws can face a problem because the contact surfaces delivering the power from the conventional tool, is transferred to the screw via very small surface areas. The consequence: the screw can become damaged (rounding out). Hex-Plus tools have a greater contact surface that prevents this from

happening! Good to know: Hex-Plus tools fit into every standard hexagon socket screw!

L-Keys for Hexagon Socket Screws

The Hex-Plus profile extends the service life of hexagon socket screws

[SHOP NOW](#)

950 PKL/9 BM N L-key set, metric, BlackLaser

Hex-Plus



9-piece set in a two-component clip

| Code | | | | |
|-------------|------------|--|----|--|
| 05022086002 | 950 PKL BM | 1 x 1.5x90 ¹⁾ ; 1 x 2.0x100; 1 x 2.5x112; 1 x 3.0x126; 1 x 4.0x140; 1 x 5.0x160; 1 x 6.0x180; 1 x 8.0x200; 1 x 10.0x219 | 10 | |

¹⁾ Regular hexagon

950 PKL/13 SZ N L-key set, imperial, BlackLaser

Hex-Plus



13-piece set in a two-component clip

| Code | | | | |
|-------------|--------------|--|----|--|
| 05021728002 | 950 PKL inch | 1 x 0.05"x83 ¹⁾ ; 1 x 1/16"x91 ¹⁾ ; 1 x 5/64"x100; 1 x 3/32"x112; 1 x 7/64"x119; 1 x 1/8"x126; 1 x 9/64"x132; 1 x 5/32"x140; 1 x 3/16"x160; 1 x 7/32"x180; 1 x 1/4"x190; 1 x 5/16"x200; 1 x 3/8"x212 | 10 | |

¹⁾ Regular hexagon

950 PKLS/9 SM SB Short-arm L-key set, metric, chrome-plated

Hex-Plus



9-piece set in a two-component clip

| Code | | | | |
|-------------|----------|--|---|--|
| 05073594002 | 950 PKLS | 1 x 1.5x90 ¹⁾ ; 1 x 2.0x100; 1 x 2.5x112; 1 x 3.0x126; 1 x 4.0x140; 1 x 5.0x160; 1 x 6.0x180; 1 x 8.0x200; 1 x 10.0x219 | 1 | |

¹⁾ Regular hexagon

950 PKL/9 SZ N L-key set, imperial, BlackLaser

Hex-Plus

NEW



9-piece set in a two-component clip

| Code | | | | |
|-------------|--------------|---|----|--|
| 05022171002 | 950 PKL inch | 1 x 5/64"x100; 1 x 3/32"x112; 1 x 1/8"x126; 1 x 5/32"x140; 1 x 3/16"x160; 1 x 7/32"x180; 1 x 1/4"x190; 1 x 5/16"x200; 1 x 3/8"x212 | 10 | |



Are there any advantages of an L-key with an extra short arm?



All users will recognise the need to saw or grind down L-keys to make them shorter for particularly confined screwdriving jobs. This has the disadvantage that they no longer have any corrosion protection at the separation point and secondly, they can become "soft" and therefore useless due to an alteration in the hardening during the shortening process.

L-Keys for TORX® Screws

Ball end tip for working at an angle

SHOP NOW

967 SPKL Tamper-proof TORX® B0 L-key, BlackLaser



Application: TORX® socket screws with and without pin (BO = bore hole)
Design: BlackLaser, durable plastic sleeve
Tip: TORX® on short arm, TORX® ball end on long arm

| Code | | mm | mm | | | |
|---------------------------|-------|-----|----|----------|---------|----|
| 05024299002 ¹⁾ | TX 8 | 76 | 16 | 3" | 5/8" | 10 |
| 05024300002 ¹⁾ | TX 9 | 79 | 16 | 3 1/8" | 5/8" | 10 |
| 05024302002 ²⁾ | TX 10 | 85 | 17 | 3 3/8" | 21/32" | 10 |
| 05024304002 | TX 15 | 90 | 18 | 3 1/2" | 23/32" | 10 |
| 05024306002 | TX 20 | 96 | 19 | 3 3/4" | 3/4" | 10 |
| 05024308002 | TX 25 | 104 | 21 | 4 1/8" | 27/32" | 10 |
| 05024310002 | TX 27 | 112 | 22 | 4 7/16" | 29/32" | 10 |
| 05024312002 | TX 30 | 122 | 24 | 4 13/16" | 1" | 10 |
| 05024314002 | TX 40 | 132 | 27 | 5 3/16" | 1 1/16" | 10 |
| 05024316002 | TX 45 | 143 | 29 | 5 5/8" | 1 5/32" | 10 |
| 05024318002 | TX 50 | 156 | 32 | 6 1/8" | 1 1/4" | 10 |
| 05024320002 | TX 55 | 171 | 34 | 6 3/4" | 1 5/16" | 5 |
| 05024322002 | TX 60 | 190 | 38 | 7 1/2" | 1 1/2" | 5 |

¹⁾ Product without bore hole at the short and without ball-end at the long arm.

²⁾ Product without ball-end at the long arm.

967 PKL TORX® L-key, BlackLaser



Application: TORX® socket screws
Design: BlackLaser surface
Tip: TORX® on short arm, TORX® ball end on long arm

| Code | | mm | mm | | | |
|---------------------------|-------|-----|----|----------|---------|---|
| 05024199002 ¹⁾ | TX 8 | 76 | 16 | 3" | 5/8" | 5 |
| 05024100002 ¹⁾ | TX 9 | 79 | 16 | 3 1/8" | 5/8" | 5 |
| 05024105002 ¹⁾ | TX 10 | 85 | 17 | 3 3/8" | 21/32" | 5 |
| 05024200003 | TX 15 | 90 | 18 | 3 1/2" | 23/32" | 5 |
| 05024202004 | TX 20 | 96 | 19 | 3 3/4" | 3/4" | 5 |
| 05024204004 | TX 25 | 104 | 21 | 4 1/8" | 27/32" | 5 |
| 05024206002 | TX 27 | 112 | 22 | 4 7/16" | 29/32" | 5 |
| 05024208002 | TX 30 | 122 | 24 | 4 13/16" | 1" | 5 |
| 05024210002 | TX 40 | 132 | 27 | 5 3/16" | 1 1/16" | 5 |
| 05024212002 | TX 45 | 143 | 29 | 5 5/8" | 1 5/32" | 5 |
| 05024214002 | TX 50 | 156 | 32 | 6 1/8" | 1 1/4" | 5 |
| 05024216002 | TX 55 | 171 | 34 | 6 3/4" | 1 5/16" | 5 |
| 05024218002 | TX 60 | 190 | 38 | 7 1/2" | 1 1/2" | 5 |

¹⁾ Product without ball-end at the long arm.

Tamper-proof TORX® B0



Designed to prevent any unauthorised unfastening of so-called safety screws. To prevent the use of "normal" TORX® tools, the screws have a protruding pin in their drive profile. This pin fits into the borehole of TORX® B0 tools, allowing the safety

screws to be unfastened. Such safety screws can be found e.g. in many electrical appliances which may only be disassembled and repaired by specially qualified staff.

TORX®



TORX® drive profiles transfers torque between tool and screw by parallel line or surface contact rather than point contact as many other profiles. This protects both the screw profile and the tool profile. It also increases the amount of torque and power that can be transferred.

L-Keys

Suitable for TORX® and TORX PLUS® Screws

[SHOP NOW](#)

967 L TORX® HF L-key with holding function, BlackLaser



Application: TORX® socket screws made according to Acument Intellectual Properties specifications
Blade: Round
Design: Holding function for TORX® screws, BlackLaser surface

| Code | | mm | mm | | | |
|-------------|-------|-----|----|----------|---------|---|
| 05024160003 | TX 8 | 76 | 16 | 3" | 5/8" | 5 |
| 05024161003 | TX 9 | 79 | 16 | 3 1/8" | 5/8" | 5 |
| 05024162003 | TX 10 | 85 | 17 | 3 1/4" | 21/32" | 5 |
| 05024163003 | TX 15 | 90 | 18 | 3 1/2" | 23/32" | 5 |
| 05024164003 | TX 20 | 96 | 19 | 3 3/4" | 3/4" | 5 |
| 05024165003 | TX 25 | 104 | 21 | 4 1/8" | 27/32" | 5 |
| 05024166003 | TX 27 | 112 | 22 | 4 7/16" | 29/32" | 5 |
| 05024167003 | TX 30 | 122 | 24 | 4 13/16" | 1" | 5 |
| 05024168003 | TX 40 | 132 | 27 | 5 3/16" | 1 1/16" | 5 |

TORX® with holding function



In tight assembly or disassembly situations, for example in engine compartments, it is not possible to securely hold the screw with the hand on the screwdriver, and the screw subsequently often gets lost.

Lengthy searches or the loss of the screw (with the associated danger that could bring about) are the consequence. The TORX® HF tools developed by Wera are ideal because they feature an optimised geometry of the original TORX® profile. The wedging forces resulting from the surface pressure between the drive tip and the screw profile mean that the screw is securely held on the tool!

967 TORX® L-key, BlackLaser



Application: TORX® socket screws
Design: BlackLaser surface
Tip: TORX®

| Code | | mm | mm | | | |
|-------------|-------|-----|----|--------|---------|---|
| 05024001002 | TX 6 | 42 | 16 | 1 5/8" | 5/8" | 5 |
| 05024002002 | TX 7 | 48 | 16 | 1 7/8" | 5/8" | 5 |
| 05024003002 | TX 8 | 48 | 16 | 1 7/8" | 5/8" | 5 |
| 05024004002 | TX 9 | 48 | 16 | 1 7/8" | 5/8" | 5 |
| 05024005002 | TX 10 | 51 | 17 | 2" | 21/32" | 5 |
| 05024008002 | TX 15 | 54 | 18 | 2 1/8" | 23/32" | 5 |
| 05024010003 | TX 20 | 57 | 19 | 2 1/4" | 3/4" | 5 |
| 05024012002 | TX 25 | 60 | 20 | 2 3/8" | 25/32" | 5 |
| 05024013002 | TX 27 | 64 | 21 | 2 1/2" | 27/32" | 5 |
| 05024015002 | TX 30 | 70 | 24 | 2 3/4" | 1" | 5 |
| 05024020002 | TX 40 | 76 | 26 | 3" | 1 1/32" | 5 |
| 05024025002 | TX 45 | 83 | 29 | 3 1/4" | 1 5/32" | 5 |
| 05024030002 | TX 50 | 95 | 32 | 3 3/4" | 1 1/4" | 5 |
| 05024035002 | TX 55 | 108 | 35 | 4 1/4" | 1 3/8" | 5 |
| 05024040002 | TX 60 | 120 | 38 | 4 3/4" | 1 1/2" | 5 |

967 IP TORX PLUS® L-key, BlackLaser



Application: TORX PLUS® socket screws
Design: BlackLaser surface
Tip: TORX PLUS®

| Code | | mm | mm | | | |
|-------------|-------|----|----|--------|---------|----|
| 05304860002 | 10 IP | 51 | 17 | 2" | 21/32" | 10 |
| 05304861002 | 15 IP | 54 | 18 | 2 1/8" | 23/32" | 10 |
| 05304862002 | 20 IP | 57 | 19 | 2 1/4" | 3/4" | 10 |
| 05304863002 | 25 IP | 60 | 20 | 2 3/8" | 25/32" | 10 |
| 05304864002 | 27 IP | 64 | 21 | 2 1/2" | 27/32" | 10 |
| 05304865002 | 30 IP | 70 | 24 | 2 3/4" | 1" | 10 |
| 05304866002 | 40 IP | 76 | 26 | 3" | 1 1/32" | 10 |
| 05304867002 | 45 IP | 83 | 29 | 3 1/4" | 1 5/32" | 10 |
| 05304868002 | 50 IP | 95 | 32 | 3 3/4" | 1 1/4" | 10 |

L-Key Sets for TORX® Screws

Powerful, ergonomic, long service life

[SHOP NOW](#)

967 SPKL/9 Tamper-proof TORX® B0 L-key set, BlackLaser



9-piece set in a two-component clip with magnetiser

| Code | | | |
|-------------|-------------------|--|----|
| 05024334003 | 967 SPKL TORX® B0 | 1 x TX 8x76 ¹⁾ ; 1 x TX 9x79 ¹⁾ ; 1 x TX 10x85 ²⁾ ; 1 x TX 15x90; 1 x TX 20x96; 1 x TX 25x104; 1 x TX 27x112; 1 x TX 30x122; 1 x TX 40x132 | 10 |

¹⁾ Product without bore hole at the short and without ball-end at the long arm.

²⁾ Product without ball-end at the long arm.

967 L/9 TORX® HF L-key set with holding function, BlackLaser



9-piece set in a two-component clip

| Code | | | |
|-------------|----------------|---|----|
| 05024244003 | 967 L TORX® HF | 1 x TX 8x76; 1 x TX 9x79; 1 x TX 10x85; 1 x TX 15x90; 1 x TX 20x96; 1 x TX 25x104; 1 x TX 27x112; 1 x TX 30x122; 1 x TX 40x132 | 10 |

Tamper-proof TORX® B0



Designed to prevent any unauthorised unfastening of so-called safety screws. To prevent the use of "normal" TORX® tools, the screws have a protruding pin in their drive profile. This pin fits into the borehole of TORX® B0 tools, allowing the safety

screws to be unfastened. Such safety screws can be found e.g. in many electrical appliances which may only be disassembled and repaired by specially qualified staff.

967 PKL/9 TORX® L-key set, BlackLaser



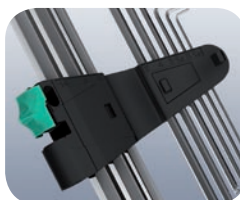
9-piece set in a two-component clip

| Code | | | |
|-------------|---------------|--|----|
| 05024242004 | 967 PKL TORX® | 1 x TX 8x76 ¹⁾ ; 1 x TX 9x79 ¹⁾ ; 1 x TX 10x85 ¹⁾ ; 1 x TX 15x90; 1 x TX 20x96; 1 x TX 25x104; 1 x TX 27x112; 1 x TX 30x122; 1 x TX 40x132 | 10 |

¹⁾ Product without ball-end at the long arm.



Is there no way of preventing L-keys from slipping out of the tool clip after frequent use?



L-keys should not slip out of the clip unintentionally. The material used by Wera is wear-resistant and ensures that the L-keys are securely held even after frequent use over a long period. The practical fold-over clip can be simply opened with the slide catch and this allows fast and easy removal of the L-keys.